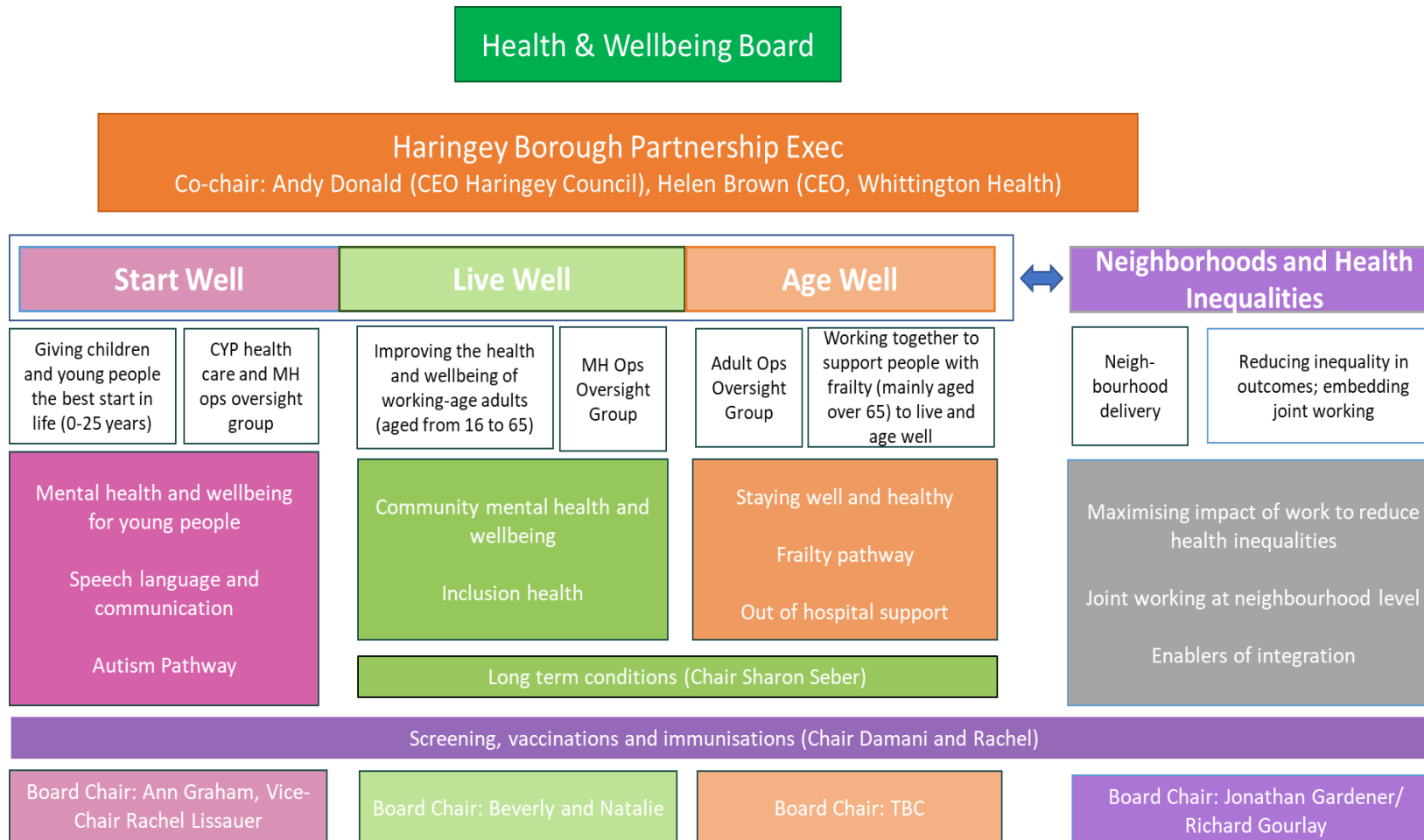


Borough Partnership Update



Children's, mental health and adults operational groups now established

Long term conditions focus reporting into joint live/age well

Visibility of screening, vax and immunisations work within borough partnership

Mapping of linked patient/public participation work underway

August focus

- Strategic overview – report back from Integrated Care Partnership on progress with population health strategy
- Highlight reports from each partnership board presented
- Focus areas:
 - Speech, Language and Communication – development of a universal service
 - Dementia
 - Adults operational oversight group – report back on work to improve hospital discharge process
- ICB Change Programme update
- Agreed focus area for next partnership board – CAMHS and mental health at St Ann's

A Population Health Update from the ICP meeting

ICP session held 11th July – key area of interest was evaluation of Inequalities Fund schemes and impact. Discussion about how the principles of inequalities fund (directing resource in line with need, working directly with communities and responding to different needs) could influence core approach of health and care system

[Appendix A. Inequalities Fund Evaluation.pdf](#)

[Appendix B. Inequalities Fund schemes progress and recommendations.pdf](#)

Focus on CAMHS and the crisis pathway for mental health. Improvements in CAMHS were welcomed. There was discussion about how non medical model (e.g. involving schools) could feature as part of ICP plans.

Seminar/workshop session with Chairs of Borough Partnerships planned for September to firm up the action plans and priority areas for Delivery Plan associated with ICP population health strategy.

Key achievements and updates this month	RAG Status	Key actions for next month
<p>Board New programme, workstreams and governance coming into place. Final draft TORs for all boards and groups circulated. New Live Well Board held 31/3 with wide representation.</p>		<ul style="list-style-type: none"> • Sign off new TORs for Boards and workstreams • Complete update of outcomes framework
<p>Mental Health BEHMHTs co-produced Haringey Community Plan for 23/24 signed off and funded Wider plan across partners including crisis, prevention and community in development Target of physical health-checks for people with severe mental illness met for first time (2,659 complete in 22/23, or 62% compared to 14% in 19/20)</p>		<ul style="list-style-type: none"> • Agree mobilisation plan for DWP funded employment programmes. • Run Haringey Inclusion Health Summit • Finalise Haringey adult MH Programme Plan for agreement in September
<p>Employment £3.5m bid secured by LB Enfield for project with Haringey for people with health conditions £300k/yr employment programme in MH Talking Therapies funded and being mobilised Haringey Council Supported Internship programme mobilised for young adults</p>		
<p>Inclusion Health Haringey summit in development New SRO agreed (Dr Will Maimaris)</p>		
Risk/Issues	RAG Status	Mitigating Actions
<p>Capacity to deliver programmes across partnership</p>		<p>External resource into adult social care and partners agreeing capacity. Broad ownership.</p>
<p>Required HBP Exec Board Action / Input</p>	<p>Note the forthcoming adult mental health plan for borough.</p>	



Key achievements and updates this month	RAG	Key actions for next month
<p>Neighbourhoods: North Tottenham pilot underway with joint funding applications submitted for Pantry and initial scoping for Community Laundrette - 50% increase in utilisation in last quarter.</p> <p>Wood Green service design dedicated services session held on 31st July to work through integrated service model – wider programme around digital integration and service offer and integration under way – scheduled opening time 2025. Workshop for HC and LL took place with follow-on meeting to discuss HC model to be held on 7th Aug. Neighbourhood clinical priorities and actions in motion for west, central and east, successful appointed workforce integration lead to start in Sept, exploration of integrated front door & DOS/case management system & website (based on learning in Islington, Barnet & Newham), Localities board rebranded to Neighbourhood Delivery Board.</p>	G	<ul style="list-style-type: none"> • Wood Green Hub service design subgroups to be established and delivered • N17 Joint funding partnership meetings arranged; application for Community Laundrette to be submitted • NRC Business Case decision expected • HC Workshop and operating model to be drafted
<p>Governance: HBP governance tweaked to reflect agreed priorities per Board, NHI board moved to quarterly, IF/Community Chest subgroup set up to provide dedicated space for project discussion, data group to start from Sept.</p>	G	
<p>Health Inequalities Programme and Community Chest</p> <ul style="list-style-type: none"> • Haringey IF Programme agreed with individual project scheduled agreed. Contracts now in place or being finalised, including more detailed outcome measures agreed with leads for each project – these include BEH MHT, NMUH & GP Fed led projects • Community Chest Phase I projects now fully mobilised • Preparations for next phase of Community Chest in place and expected to be launched in H2 2023/24. This opportunity for additional funding for VCSE will be linked to establishment of Community Participatory Budget within the east of Borough – additional expertise secured with Transformation Partners [new name for Healthy London Partnership] to take forward development of participatory forum and decision-making. • Council-led VCSE capacity building specification being finalised to inform procurement process for lead in Q4 2023/24 	G	<ul style="list-style-type: none"> • Finalise remaining contract arrangements, agree metrics and continue/start to report on these outcomes • Continue to shape Healthy Community Zone initiative around NMUH and finalise investment available • Continue to prepare evaluation of IF Programme • Finalise potential funding arrangements for Phase II Community Chest/Community Participatory Budget and initiate joint project with partners • Continue to progress VCSE capacity building procurement





Continued...

Key Achievements & Updates this month	RAG	Key Actions for Next Month
<p>Information and Insights Group</p> <ul style="list-style-type: none"> Individual Boards have started to develop/report on agreed outcome metrics, including those in driver diagrams developed to focus on key priority for Board, and on other relevant metrics (e.g. statutory reporting datasets such as for BCF Plan) Public Voice-led coproduction toolkit now out in draft to support engagement, research and co-design between residents/patients, VCSE and statutory sector and launched in July Council developing profiles to describe issues/needs of specific communities in Haringey including in terms of health needs Needs assessment associated with mental health currently being developed within Public Health 	A	<ul style="list-style-type: none"> Multi-agency Insights group to meet to form work programme and agree priorities to support Boards Boards to progress development/roll out of outcomes framework, including reporting on driver diagrams Continue to progress with existing projects and initiatives, including needs analysis and population profiling Influence NCL Outcomes Framework development
Risks & Issues	RAG	Mitigating Actions
<p>Potential capacity issues to continue to support IF Programme and Community Chest roll out, and to support outcome monitoring and development for Boards</p>	A	<p>Outcomes monitoring to be absorbed into individual Boards portfolio with support from Public Health, Council and NHS analytics colleagues. IF Programme and Community Chest roll out will be supported through combination of existing Council/NHS resources and additional expertise to pump-prime development of Community Participatory Forum in east, building on what already in place.</p>
<p>Health Inequality Contracts to be signed off by End of June for payment after. If delayed, the next window is end of July for contract acceptance and subsequent payment</p>	A	<p>Richard and Duy from the ICB Health Inequalities team are continually working with the commissioners and project leads to finalise</p>
Required HBP Exec Board Action / Input		

Key achievements and updates this month	Key actions for next month
<p>Speech, language and communication needs (SLCN) – see separate slide for overview. New co-produced Primary School pathway in place and communications materials being developed. Training and engagement with key schols staff and other stakeholders and delivery partners underway.</p>	<p>Continue SLCN mobilisation including parent carer engagement and planning for roll by school.</p>
<p>Autism update - Waiting times for autism assessments are under 52 weeks. The ICB have commissioned 2 voluntary sector providers (Markfield & Open Door) to provide families with pre and post- diagnostic support (started Dec 2022). The ICB and the LA are working together to ensure families receive early help support information whilst awaiting an assessment. The number of children and young people awaiting autism assessments needs to reduce further and consultation with external providers indicates that two have capacity to help us reduce our waiting list.</p>	<p>Ensure NHS services are in a good state of readiness for SEND inspection as per risk / action below</p>
<p>Mental Health – CAMHS investment schemes agreed and implementation projects now underway (A) a redesigned access service in phase 1) to be consistent across Barnet, Enfield and Haringey boroughs and phase 2) to integrate locally with key partners for a better resident journey; (B) a new 0-5s pathway, addressing a gap in Haringey’s provision, (C) Expanding the support to Looked After Children in Haringey and living elsewhere to support their placements and equality of access to treatment.</p>	
<p>Family hubs - Haringey has received around £3.3M DfE funding to deliver Start for Life and Family Hub Services for children and young people aged 0 – 19 and their families over the next three financial years. The Family Hub model must create a network of welcoming family hubs that are for children and young people aged 0 – 19 physically, virtually and via outreach and publish a start for life offer. Services in scope include reducing parental conflict, debt and welfare support, mental health services, substance misuse support, youth services, housing support SEND support and Start for Life universal services. Triangle Family Hub is our first hub and opened on 28 June. The second hub launches in January 24 and hubs 3 and 4 launch in Jul 24.</p>	
Risk/Issues	Mitigating Actions
<p>SEND inspection – partners continue to prepare for the new joint CQC/Ofsted SEND inspection framework. It will be an inspection of the ‘area’ not just the council or the NHS. This new framework presents a real shift from the previous inspection which focused on compliance to outcomes for children and young people with SEND. There are three possible inspection outcomes:</p> <ul style="list-style-type: none"> • The local area partnerships arrangements typically lead to positive experiences and outcomes for children and young people with SEND. The local area partnership is taking action where improvements are needed. • The local area partnerships arrangements lead to inconsistent experiences and outcomes for children and young people with SEND. The local area partnership must jointly to make improvements. • There are widespread and/or systemic failings leading to significant concerns about the experiences and outcomes for children and young people with SEND which the local area partnership must address urgently. 	<p>The team preparing for the next inspection is learning from those London authorities that had already had their inspection under the new framework. Plans are in place and partners are working to collate the documents and further embed improvements.</p>
Required HBP Exec Board Action / Input	<p>Note the milestone in the SLCN partnership work as it prepares to begin borough wide roll out.</p>



Haringey's new SLCN pathway

The wider implementation of the borough's improved support for SLCN work begins in September 2023, with Council and NHS investment into an enhanced Speech and Language Therapy service and a new Language Support offer in schools, working with education staff, children and parents to provide early support, based on need.



Support for all

- Information and tips for parents and carers
- Training for early years workforce and schools staff
- Resources for early years and schools to use in daily learning and play
- Helpful ways for professionals to identify additional needs and get the right support
- Stay and play groups



Extra for Some Children

- Group and 1-1 programmes in early years and school settings
- Specialist therapy and specialist teacher guidance to schools
- 'Whole school' programmes on learning and mental wellbeing
- Consistent screening and referrals to make sure children who need it are referred to specialist therapy input
- Family Hubs



More for Those Who Need it

- Speech and language therapy for children who require that
- Specialist assessment and blocks of therapy interventions
- Individualised support strategies and communication development
- Therapists working in special schools and in 'teams around a child' with other professionals and NHS services
- Specialist 1:1 and group work



Speech Language and Communication Needs Transformation

Delivery of the new pathways & Investment to achieve it.

Support for All:

- Workforce development programmes for all Primary school and Early Years staff
- Screening tools & resources for all schools and universal health services, eg Health Visiting
- Public facing information, guides and advice on child development and getting more help

Extra for Some Children:

- 3 x Early Years Language Support Assistants & 3 x Primary Language Support Assistants delivering groups and enhanced support, alongside teaching and learning staff
- Additional specialist Teacher and Therapist capacity to support practice development and delivery
- Northumberland Park programme, targeted BAME groups and Early Years groups continuing.

More for Those Who Need it

- Expanded SLT capacity and delivery of consistent interventions for children
- Reduced pressure on services releasing capacity to recycle into interventions, reducing waiting lists and ensuring children without EHCPs get fair access to support

Fund	Value
ICB Inequalities Fund	£51k
ICB Core Offer	£206k
Council Safety Valve	£360k
Council Family Hubs	£187k

Key Achievements & Updates this month	RAG	Key Actions for Next Month
<p>Early Help & Prevention:</p> <ul style="list-style-type: none"> Set up Ageing Well Training & Awareness-Raising project and working with partners/residents to agree content – launch in H2 2023/24 Community Chest/Healthy Neighbourhoods for voluntary sector projects launched for 2022/23 Working towards development of Community Participatory Budget for 2022/23 Progressed multiple prevention projects including west locality project on frailty, joint work between primary care and sheltered accommodation, involvement with MH needs analysis and developing multi-agency solutions to improve social isolation & bereavement 	G	<ul style="list-style-type: none"> Continue to progress key EHP projects listed in achievements, including planning for VCSE infrastructure and Community Chest/Participatory budgets with partners and fit with localities, including west frailty project
<p>Dementia</p> <ul style="list-style-type: none"> Action plan developed outlining agreed priorities between partners & those with lived experience with dementia, focus on awareness raising & improved coordination of support Dementia Coordinator re-started Dementia Friendly Haringey partnership – first meeting launched Dementia Steering Group restarted to better shape project delivery and outcome monitoring Cross-NCL dementia group now scheduled to share learning and pool resources 	A	<ul style="list-style-type: none"> Progress dementia action plan: Continue to strengthen and expand Dementia Friendly Haringey partnership increasing membership in next quarter Work with practices with lower diagnostic rates Improve multi-agency ‘offer’ to improve post-diagnostic support with residents and partners
<p>Long-Term Conditions, Planned & Proactive Care</p> <ul style="list-style-type: none"> Mapping of existing LTC projects completed & priority areas identified for local implementation as part of LTC Board, including progressing IF Programme to support diverse communities Proactive care – MACC – Team evaluation progressed with positive and largely equitable outcomes and reduced secondary care interventions for patients but could improve reach to community Agreed ICB investment in falls service/network and mobilised multi-agency improvement project 	G	<ul style="list-style-type: none"> Fully establish LTC Programme Board and governance and progress its initial priorities Finalise MACC Team evaluation with recommendations for improvement in August Mobilise WHT falls service project investment & wider falls network development in next quarter
<p>Crisis Management and Support for Recovery</p> <ul style="list-style-type: none"> Additional investment in NHS P1 Home First solution and Rapid Response (admission avoidance) with initial plan developed P1 Home First project mobilised between ICB, Council & WHT to progress joint approach to support people at home – however, more work needs to be undertaken on threshold of need’ Continued to develop NCL-wide P2 approach, including planning changes to Canterbury/Capetown Improved support for people with challenging housing environment/at risk of homelessness 	A	<ul style="list-style-type: none"> Agree interim arrangements to manage P1 home first patients between partners, including working together to resolve ‘threshold of need’ Progress NHS P1 Home First and Rapid Response mobilisation projects and develop specification Integrate P1/P2 solution development locally within wider NCL development of joint solutions
Risks & Issues	RAG	Mitigating Actions
<p>‘System shocks’: Financial and operational demand-led pressures for housing, health and care services due to c. 20% increase in number of people with multi-morbidity/moderate or severe frailty between post-Wave 1 and now due to legacy of pandemic, and impact of cost of living has led to greater complexity of cases in community and hospital, which has also impacted on integration of services</p>	R	<p>Greater investment in community services, greater focus on better utilisation of joined-up planned care solutions. Better utilise investment to support recovery solutions</p>
<p>Capacity & recruitment issues associated with health and care professionals & rising costs with care providers impact of quality and delivery</p>	A	<p>Progress joint workforce planning between agencies and more intensive recruitment & retention amongst key staff, e.g. therapists, alleviated some pressures</p>
Required HBP Exec Board Action / Input	<p>Further develop processes for resolving Home First case disputes through Operational Adult Group.</p>	

Dementia update

Key updates

- **Setting up a Haringey wide dementia working group** – Purpose of this group is to bring key partners across NHS, council and VCS together who are working on dementia to share plans, make sure we're aligned and identify opportunities to work together on shared priorities/areas.
- **BEH memory service challenges with post-diagnostic support** – met with BEH to talk through the challenges with post-diagnostic support. Identified some practical actions to help with this, including adding this as one of the first priority areas for the dementia working group to focus on.
- **Dementia charter** – Met with GP Federation data analysts to understand how EMIS and other data sources (e.g., Dementia QOF register) can be used to try to estimate the number of people diagnosed with dementia in Haringey on an aggregate level, what stage of disease progression they are in, and what setting they are likely to be in (e.g., care homes, sheltered accommodation, extra care facilities etc.). This will help us to understand how systematically we identify professionals/volunteers in the distributed network of people who could be the key contact depending on the level of need and circumstances of the individual (**see tiered approach on next slide and copy of charter**).
- **Improving diagnosis rates in primary care** – we have agreed with primary care colleagues an approach to take with this, which involves focusing on practices who have recently updated their GP extract data and are showing lower diagnosis rates. Primary care colleagues are identifying the best way to approach these practices to explore the reasons with them for their lower rates and supporting/encouraging them to improve these.
- **Dementia Reference Group** – held meeting on 13 July focusing on housing repairs and housing tenancy. Next Dementia Reference Group to focus on adjustments to the home.
- **Dementia and Safeguarding pack** – pack is being updated to simplify the language and layout based on feedback received. Working with a young carer to do this.
- **Dementia reminiscence and carers therapy pack** – packs continue to be developed. Have linked in with BEH to ensure these packs are included in the post-diagnosis support information pack they are developing.
- **Dementia Friendly Haringey** – next event on Friday, 11 August.
- **Ageing well training – Dementia Champions Module** - Ageing well training TaF group have agreed for dementia to be a module offered under the champions theme. We have begun to identify topics for the module to cover, and existing resources that can be included as part of it.
- **Dementia plans** – we continue to develop our plans for dementia and anticipate the Haringey wide dementia working group will help to inform and shape our high-level plans